

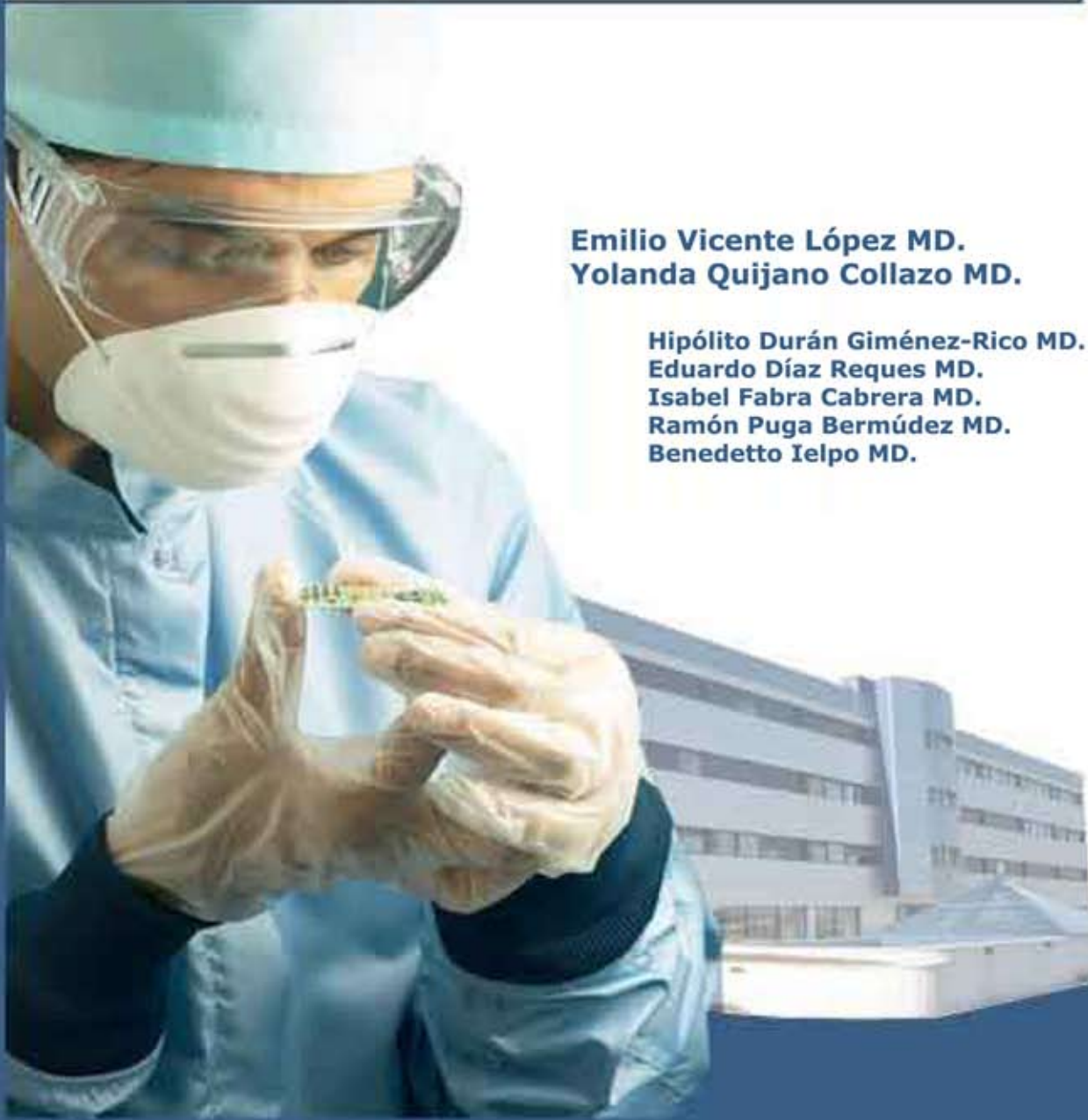


General and Digestive Surgery Department

Extended pancreatic surgery

Clinical case:

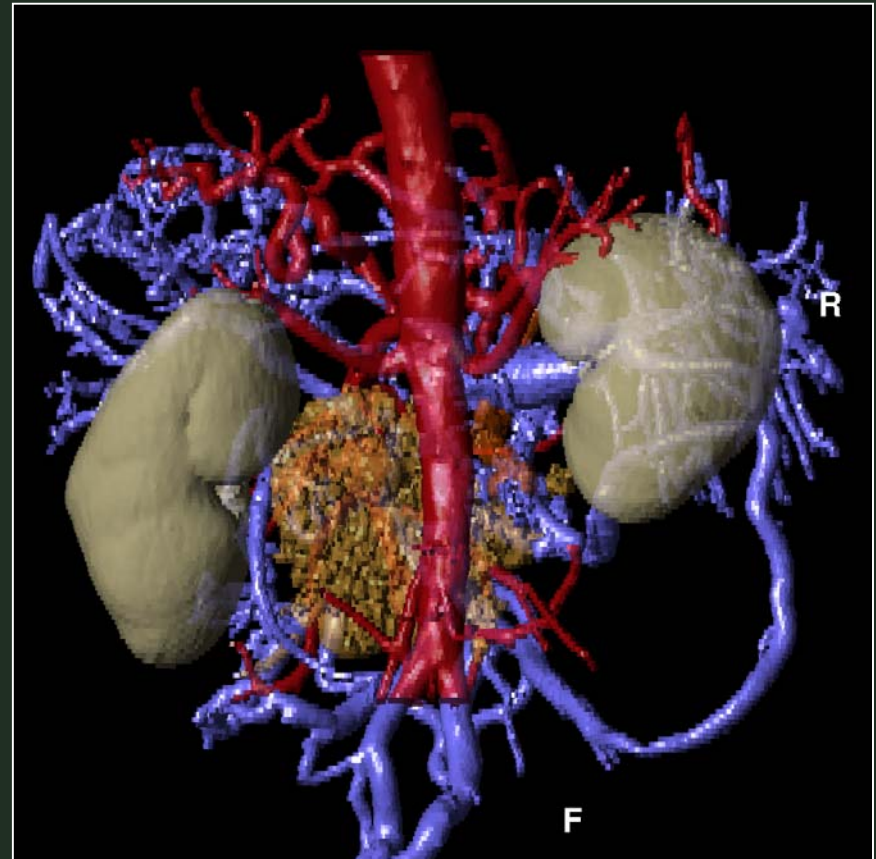
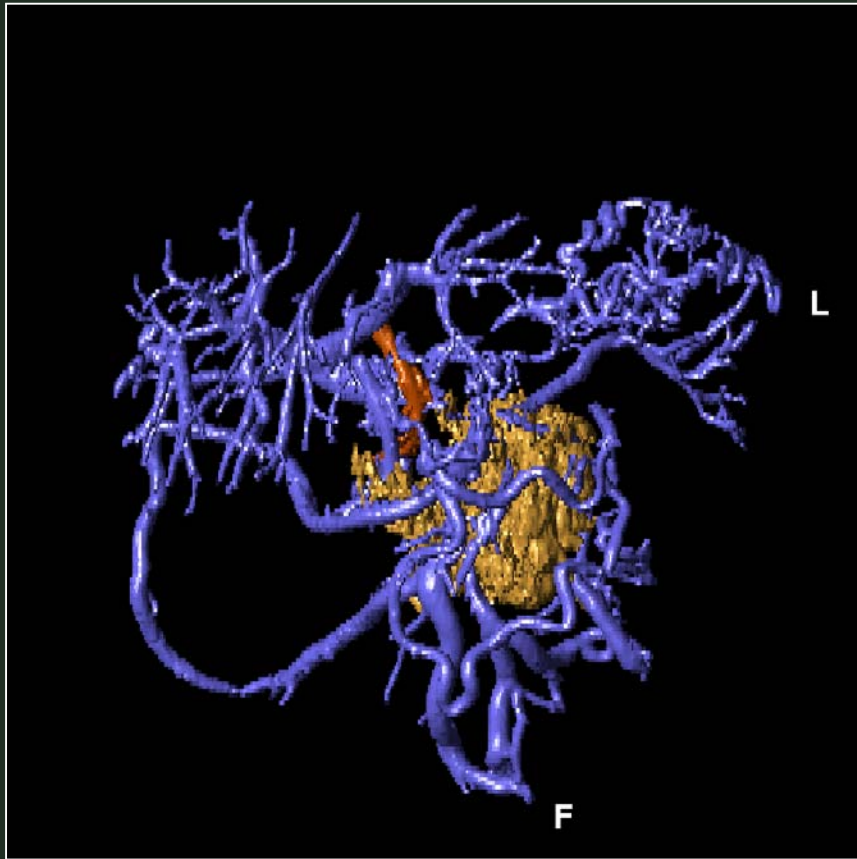
Non-functioning neuroendocrine pancreatic tumor of the head of the pancreas with involvement of the superior mesenteric artery (5 cm) and vein (6 cm)



**Emilio Vicente López MD.
Yolanda Quijano Collazo MD.**

**Hipólito Durán Giménez-Rico MD.
Eduardo Díaz Reques MD.
Isabel Fabra Cabrera MD.
Ramón Puga Bermúdez MD.
Benedetto Ielpo MD.**

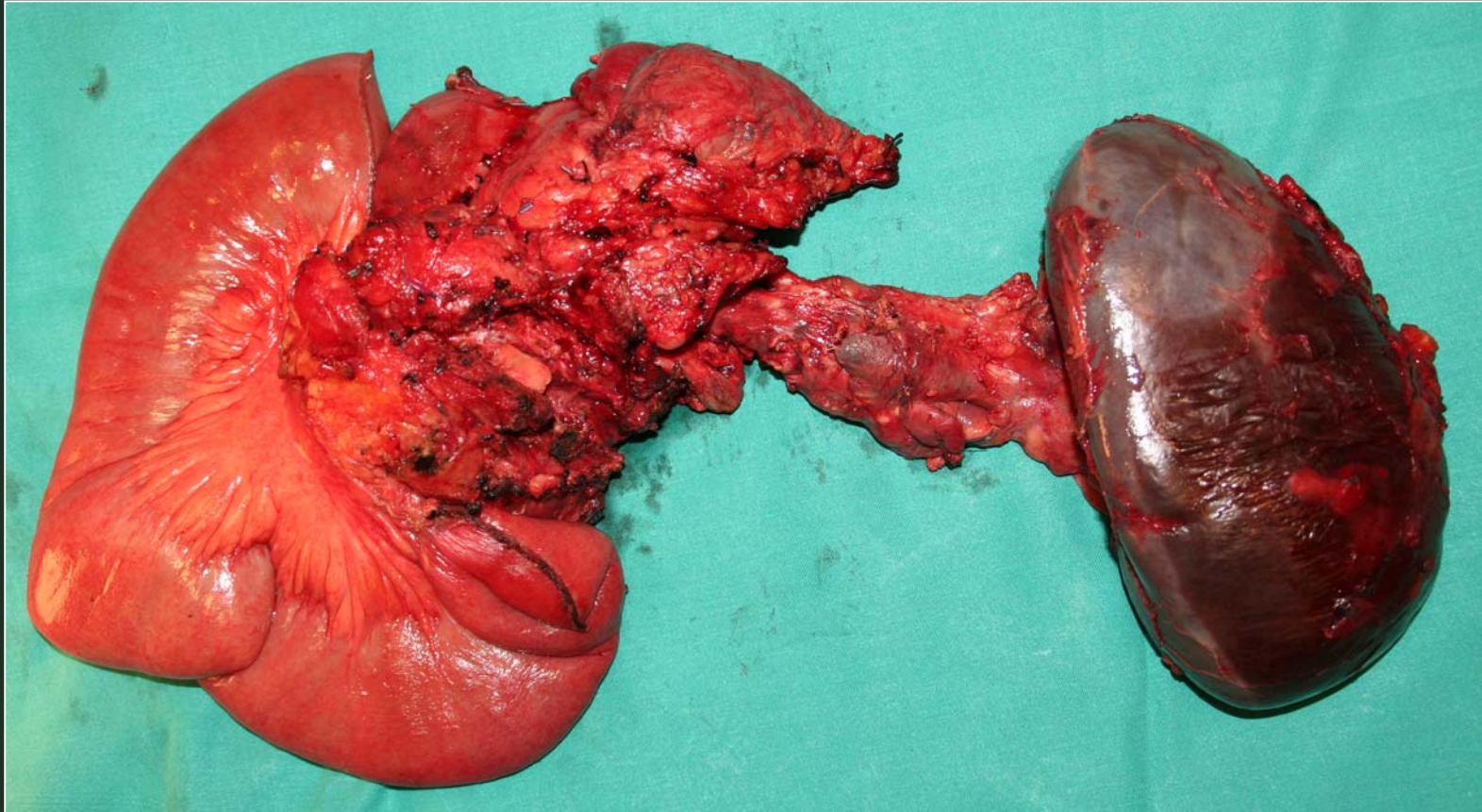
EXTENDED PANCREATIC SURGERY



Non-functioning neuroendocrine tumor of the head of the pancreas with involvement of the superior mesenteric artery (5 cm) and vein (6 cm)



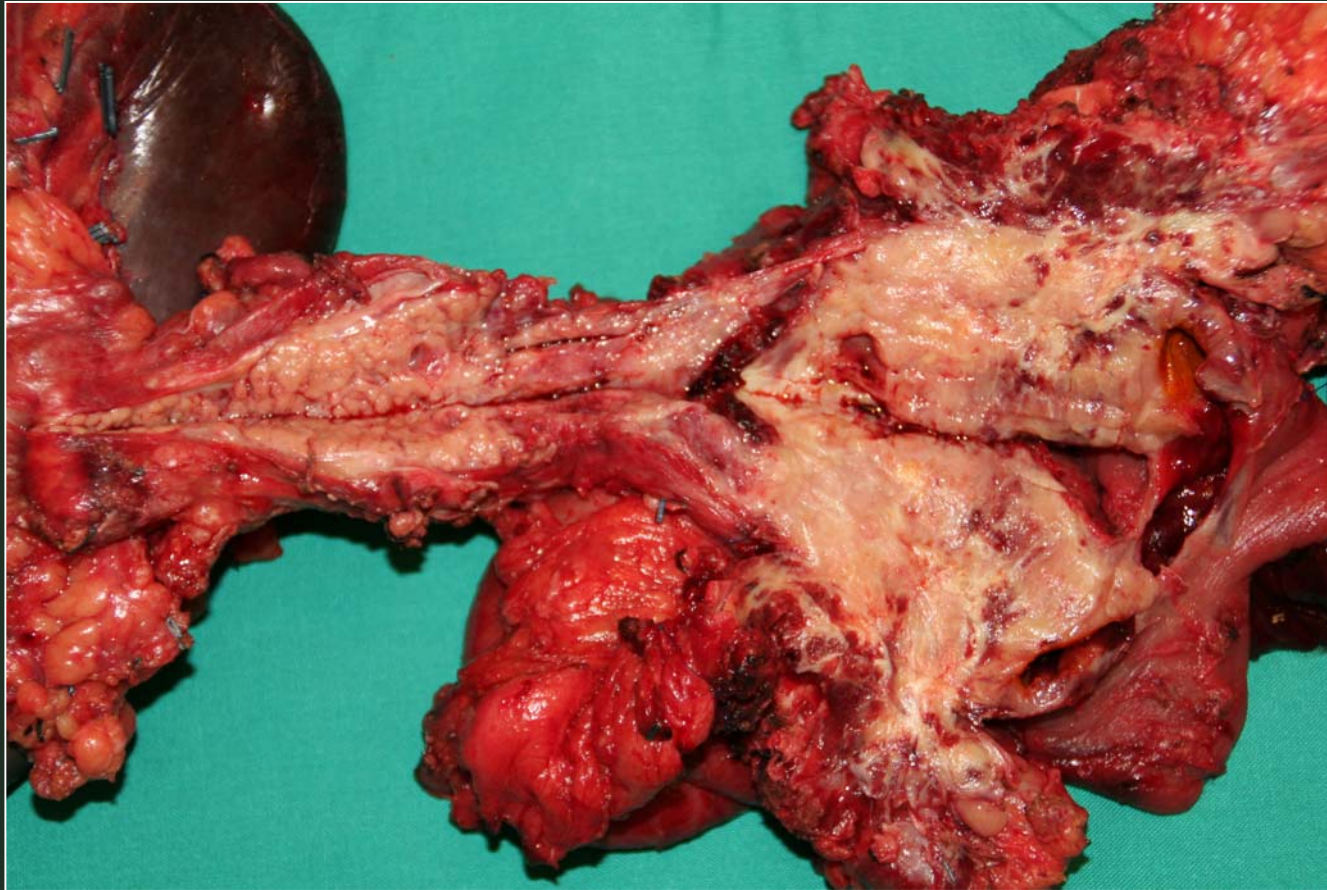
EXTENDED PANCREATIC SURGERY



Total spleno-pancreaticoduodenectomy with resection of the superior mesenteric artery (5 cm) and vein (6 cm)



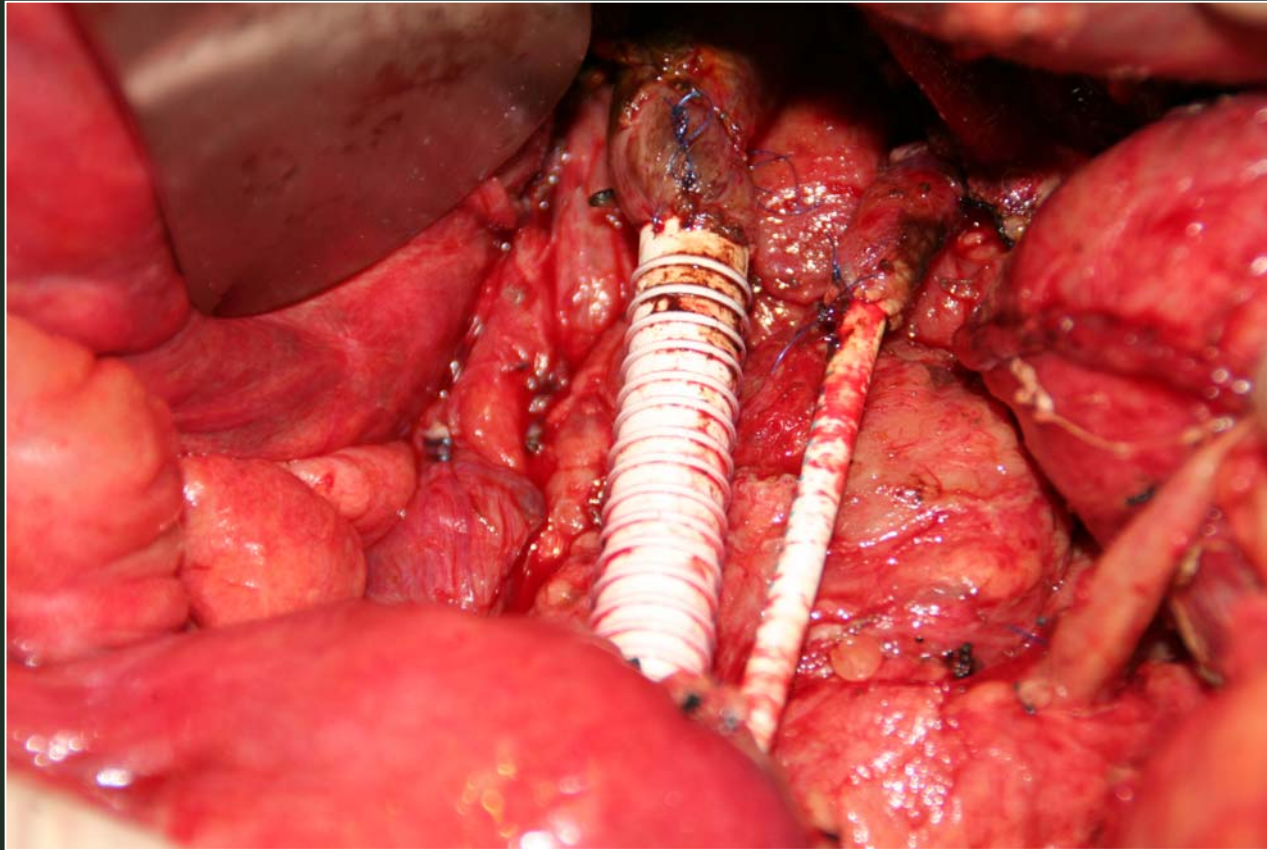
EXTENDED PANCREATIC SURGERY



Total spleno-pancreaticoduodenectomy with resection of the superior mesenteric artery (5 cm) and vein (6 cm)



EXTENDED PANCREATIC SURGERY



Vascular reconstruction with double ringed graft after Total splenopancreaticoduodenectomy with resection of the superior mesenteric artery and vein

