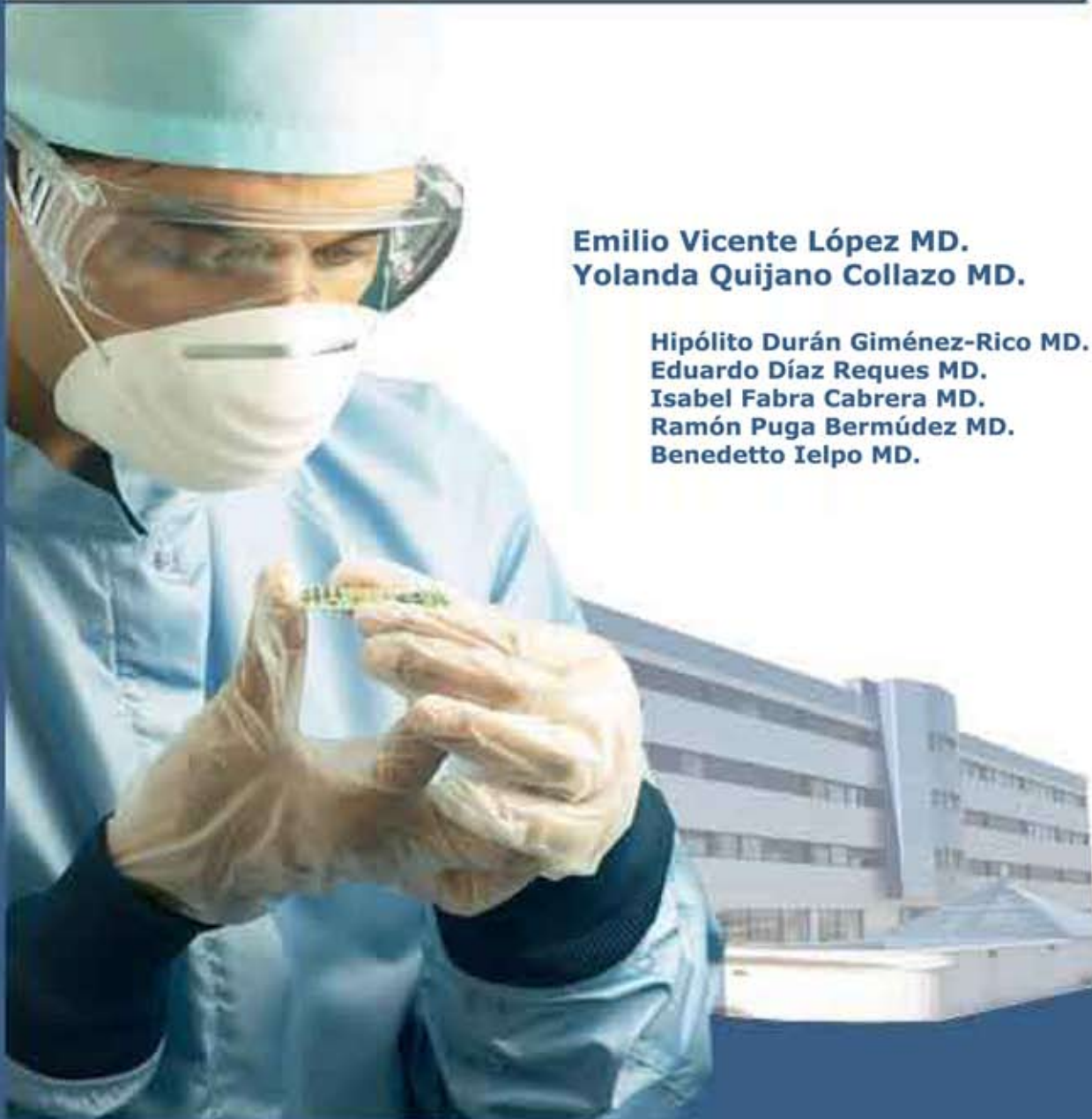




## General and Digestive Surgery Department

Extended pancreatic surgery

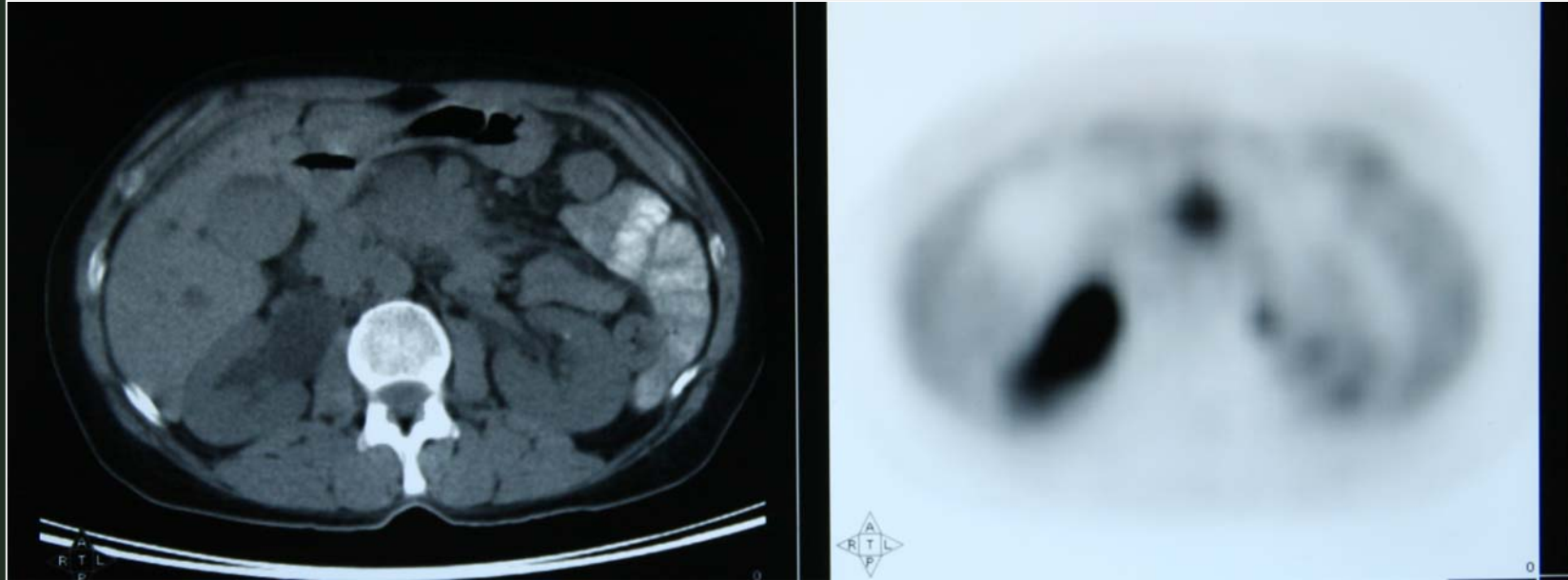
**Clinical case:**  
**Carcinoma of the head of the pancreas with a diameter of 3 cm and involvement of the superior mesenteric artery**



**Emilio Vicente López MD.**  
**Yolanda Quijano Collazo MD.**

**Hipólito Durán Giménez-Rico MD.**  
**Eduardo Díaz Reques MD.**  
**Isabel Fabra Cabrera MD.**  
**Ramón Puga Bermúdez MD.**  
**Benedetto Ielpo MD.**

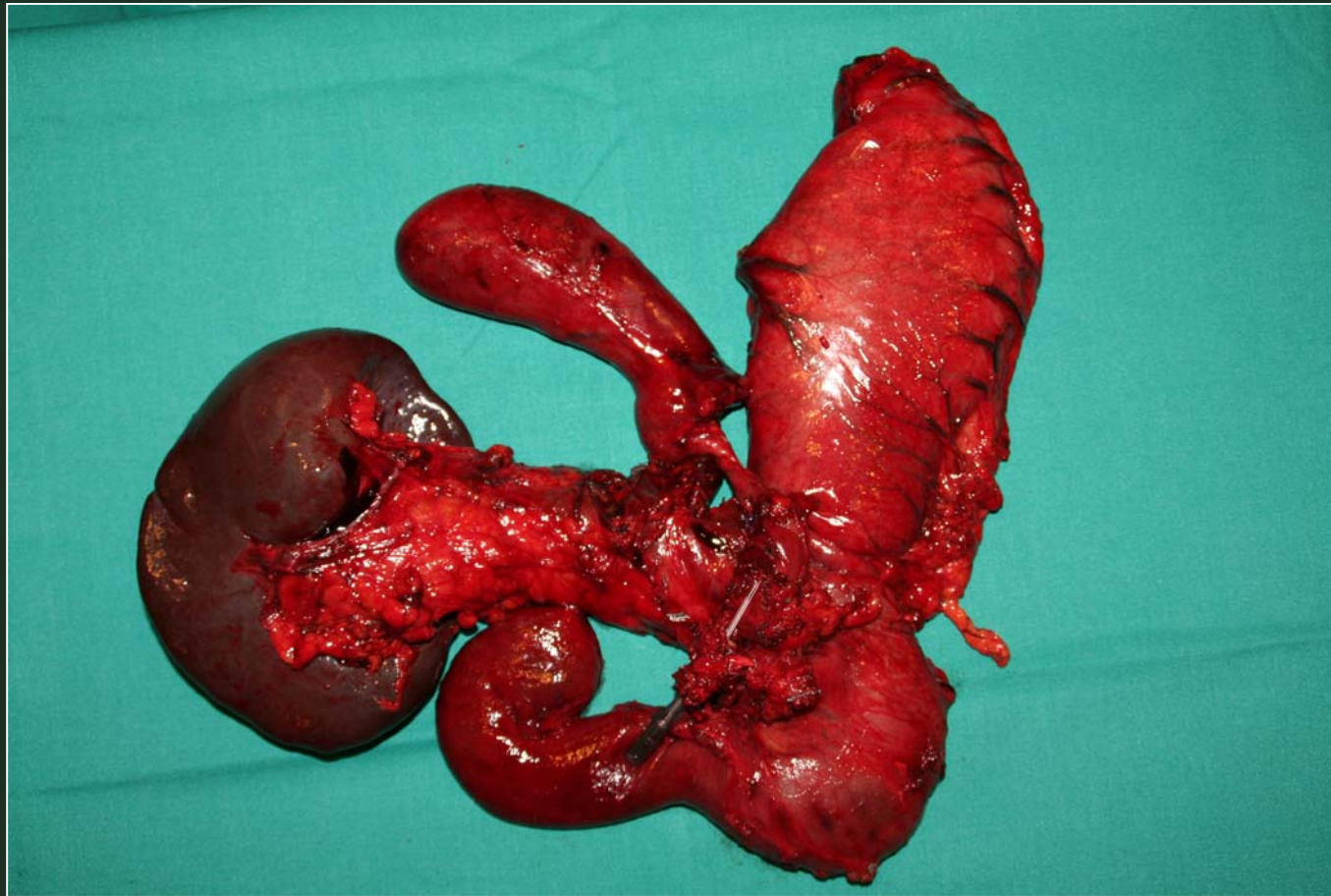
# EXTENDED PANCREATIC SURGERY



**Carcinoma of the head of the pancreas with a diameter of 3 cm and involvement of the superior mesenteric**



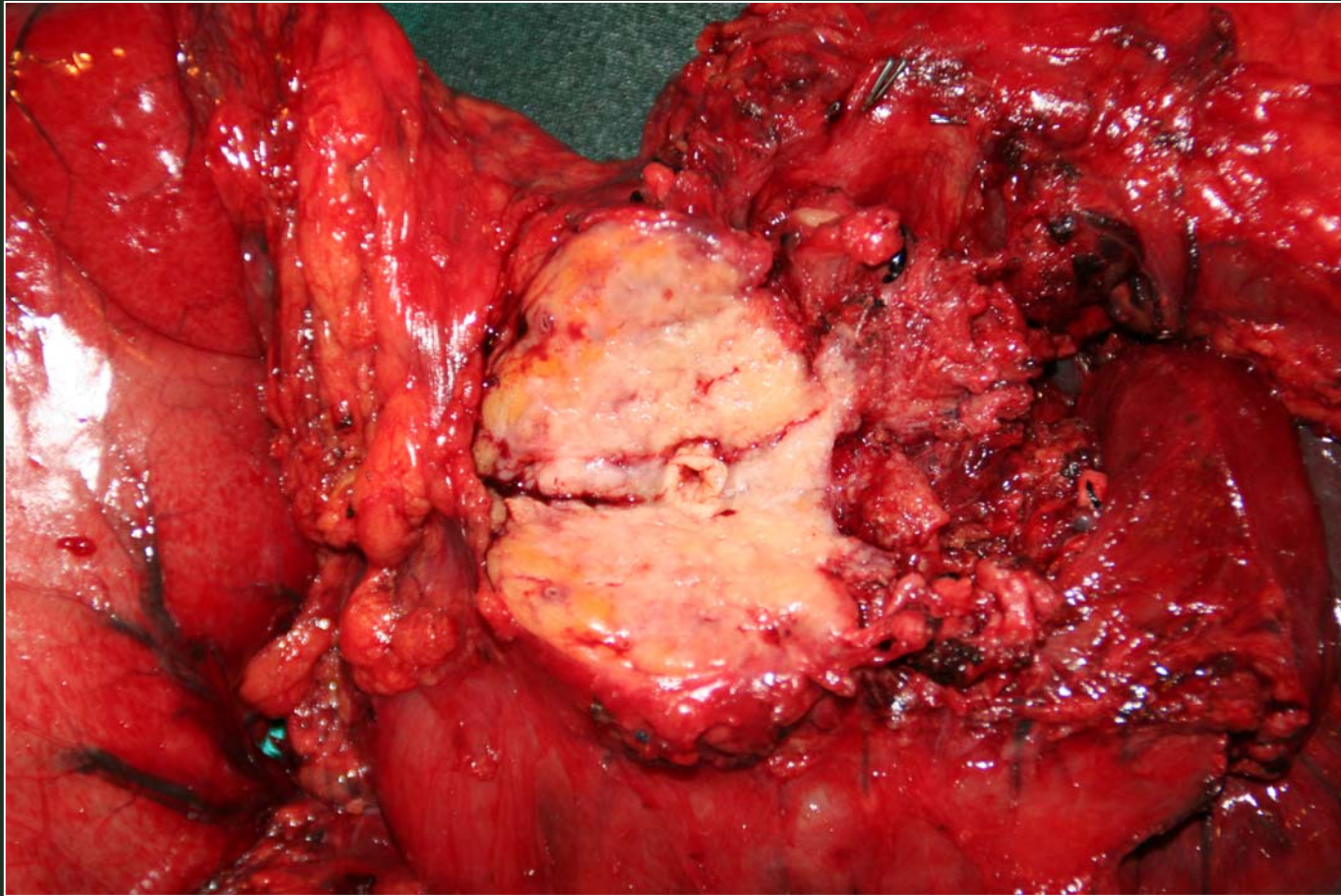
# EXTENDED PANCREATIC SURGERY



**Complete spleno-pancreaticoduodenectomy with resection of the superior mesenteric artery (3 cm)**



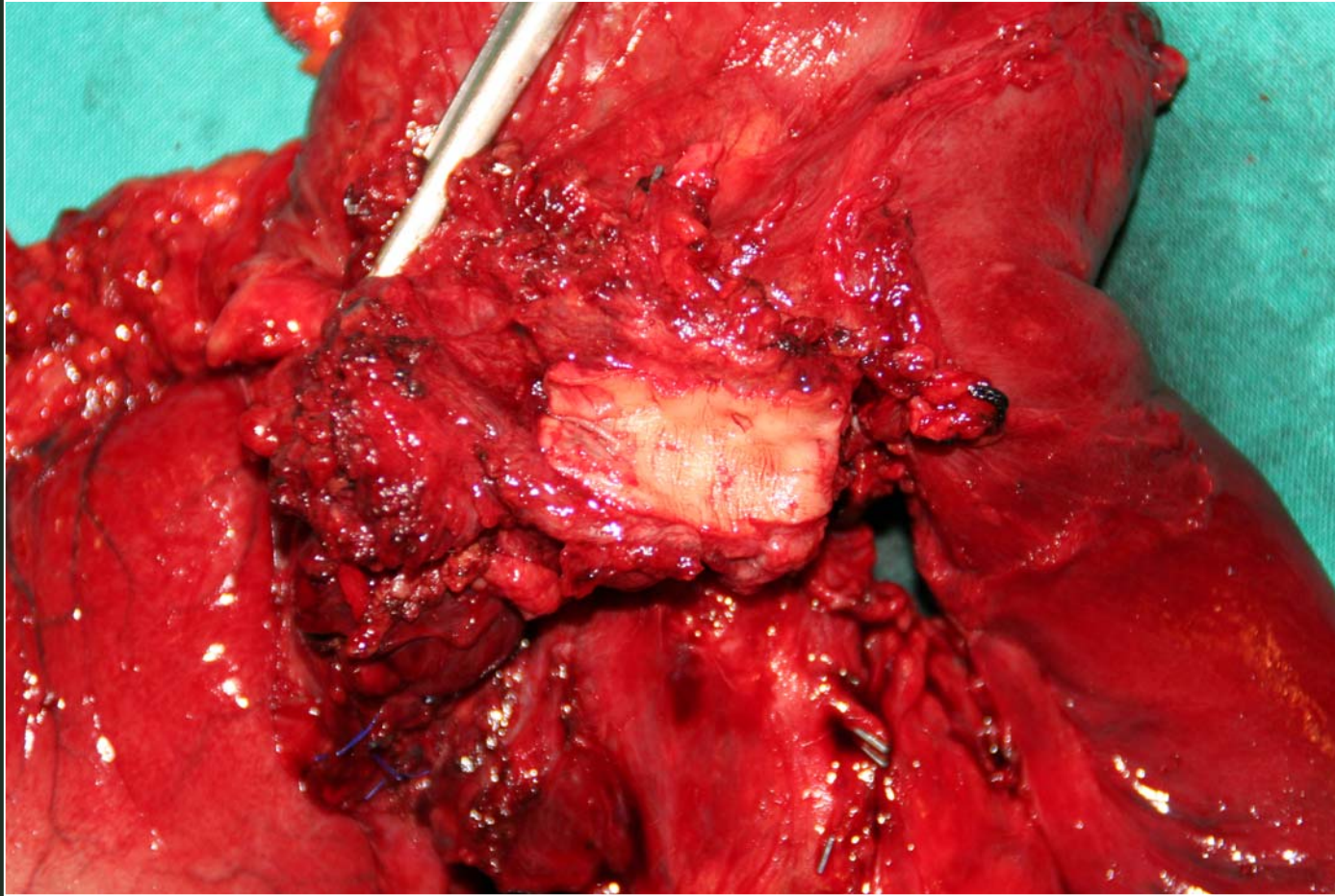
# EXTENDED PANCREATIC SURGERY



**Carcinoma of the head of the pancreas with a diameter of 3 cm and involvement of the superior mesentery**



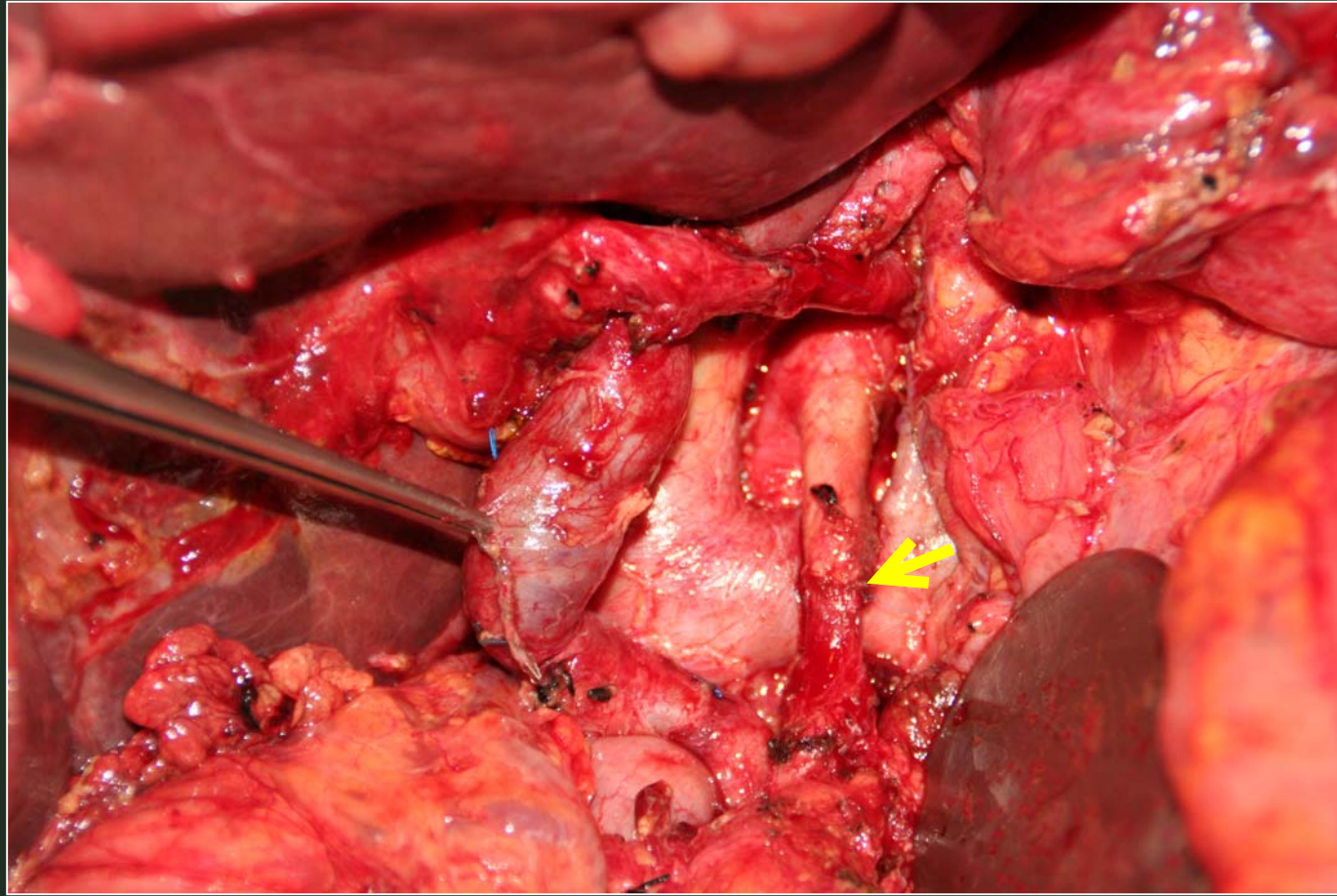
# EXTENDED PANCREATIC SURGERY



**Complete spleno-pancreaticoduodenectomy with resection of the superior mesenteric artery (3cm)**



# EXTENDED PANCREATIC SURGERY



Reconstruction of the artery after complete spleno-pancreaticoduodenectomy with resection of the superior mesenteric (3 cm)

